

New School Building update



November 2017

*Newton Poppleford
School*

Vicky Morgan 93.

Brief background

- Applications for PSBP 2010
- ESFA announcement of 260 schools 2011
- First meeting with the ESFA – July 2014
- Design meetings 2015-6
- Planning application 2017
- Building starts July 2017

Timetable

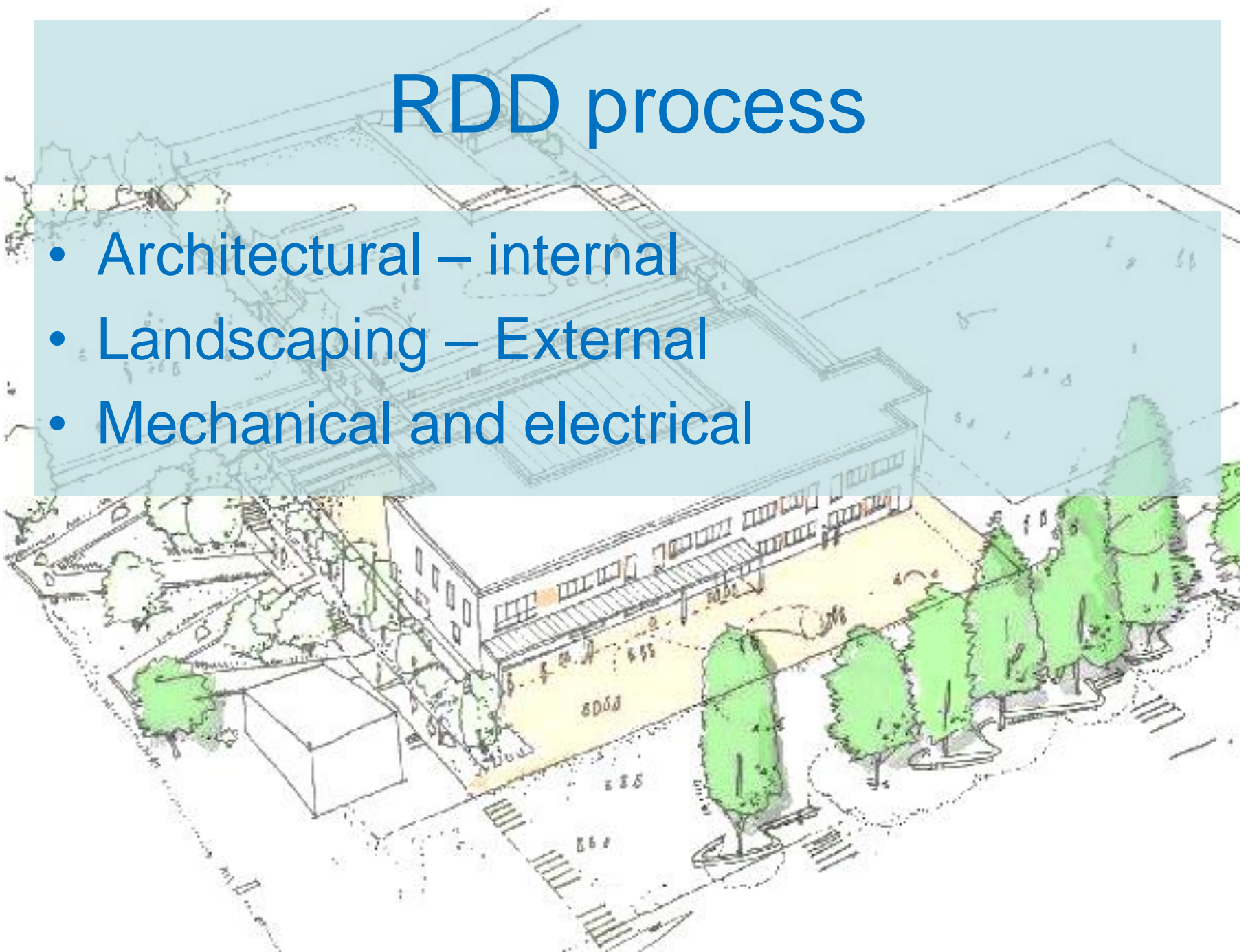
- School build part 1 to be finished during Summer term 2018
- Current school packed up during last weeks of summer term (volunteers!)
- Contents moved during Summer break
- Term dates for 2018-19 – start Monday 10th September

Term dates 2018-19

- **Autumn term starts Monday 10th September**
- Half-term 22/10 – 26/10 (Inset day 29/10)
- End of term 21/12/17
- Spring term starts 8/1/18
- Half term 18/2 – 22/2
- End of term 4/4/18
- Summer term starts 23/4/18
- Half-term 27/5 – 31/5
- End of term 23/7/18

RDD process

- Architectural – internal
- Landscaping – External
- Mechanical and electrical



RDD process

- Floor finishes – carpet, hall, wet areas, walls, etc.
- External finishes
- Kitchen design
- Toilets
- External lighting
- Access control
- Lock suiting

What next?

- Further update meeting for parents in Spring/Summer
- Packing up end of summer term
- Unpacking beginning of Autumn term 2018
- Start and end of school day to be reviewed for Autumn term 2018
- Demolition work to start Summer 2018
- Works completed and finished – February 2019

How can you help?

- Packing and unpacking – volunteers?
- PTFA £10,000 challenge

