

POPPLEFORD POST

2017/1

JANUARY 2017

DIVERSE DATES FOR YOUR DIARY

Urban Sports takes
place on Mondays and
Fridays until half term

Wednesday, 25th
January
Reception Class Cake
Sale

Friday, 10th February
INSET Day

13th-17th February
Spring Term Half
Term

Wednesday, 22nd
February
Year 2 Class Cake Sale

Friday, 24th February
PTFA Quiz and
Puddings evening

Friday, 31st March
End of Spring Term



Welcome back to a new term at Newton Poppleford Primary School. We hope you enjoyed the Christmas break.

The beginning of a new year is a good time to remind everyone about important information.

School Starts at 9.00am

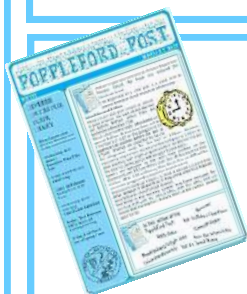
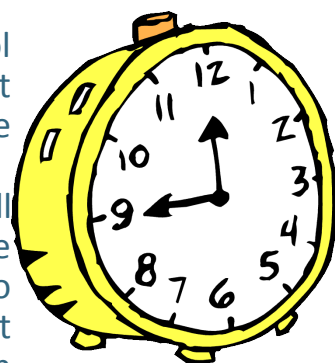
Please ensure that your child is at School in good time for the start of the day but not before 8.45am unless they are booked into Breakfast Club.

Please note that the **main school gate** will open at 8.45am. At that time there will be 2 members of staff on the playground to supervise the children before the bell at 8.55am. Children are expected to be on the playground ready for the bell at 8.55am. However, classrooms may remain closed until the bell goes at 9.00am to allow teaching staff ample preparation time for the coming day. The door to the Reception **will** be open from 8.40am.

Parents are welcome to stay with their children on the playground until 8.55am if they wish. But, if they need to drop children off at 8.45 and leave, then this is fine as staff will be out on the playground to supervise from this time.

Registration starts at 9.00am. A child is classed as late if they arrive between 9.00 and 9.10. If they arrive after 9.10 they are recorded as an unauthorised absence.

First thing in the morning parents may leave messages for teaching staff with the school office staff. The office staff will ensure that the teacher receives them at the earliest possible opportunity.



In this edition of the
Poppleford Post:

Absences

Year 1's Make a Face Poem

Nerdy Notes

Sidmouth Rugby

Breakfast and Twilight clubs

From the School Office

Celebration Assembly

Year 3's Tunnel Photos



FROM THE SCHOOL OFFICE

BREAKFAST AND TWILIGHT CLUBS

Please be aware that as of the 1 January 2017 there will be a change to the pricing structure for the use of Breakfast and Twilight Clubs, as follows:

Breakfast Club:

1st Child - £3.00 2nd Child - £2.50 3rd & subsequent child/children - £2.00

Twilight Club until 5pm:

1st Child - £5.00 2nd Child - £4.50 3rd & subsequent child/children - £4.00

Twilight Club until 6pm:

1st Child - £8.00* 2nd Child - £7.50* 3rd & subsequent child/children - £7.00*

(*optional +£2.00 for a packed tea, 6pm bookings only)

Breakfast and twilight clubs are an extended service of the school and as such charges are set only to cover our costs. The slight increase in the basic charge for 1 child still offers excellent value for money (compared to other providers) and the sliding scale for siblings should also be of benefit to you.



GOING HOME AT THE END OF SCHOOL



If your child is going home with another parent / adult could you please either inform the School Office or put a note in your child's Home-School Diary.

When children are going home to another child's home to play or visit, it is a good idea for the respective parents to exchange telephone numbers. This way parents could contact directly rather than involve the teacher or the School Office.

Everyone knows the importance of children attending school. Our Educational Welfare Officer has provided us with some thought-provoking facts about school attendance.

Did you know...

If a child is 5 minutes late every school day....

that adds up to 3 days lost every year.

If a child is 15 minutes late every school day....

that adds up to almost 10 days lost every year.

If a child is absent from school 1 day a week throughout their school life...

they will be missing 2 years of education.

90% attendance throughout your school is equal to missing 1 whole year of education.

Research has shown that children who do not attend school regularly are more likely to:-

- Fall behind in their school work
- Find it difficult to make and keep friends
- Be unhappy at school
- Misbehave so others cannot see that they are finding the work difficult
- Get into bad routines that can affect them getting or keeping a job later in life

Every minute really does count!

Here are some of the reasons children gave who were either late or absent from school:

- I got up late, so I stayed at home.
- I went to get some new shoes.
- I had a late night
- I got a headache
- I went to a wedding
- I had a sore throat
- I could not find my jumper
- My sister/brother was off school
- I had an appointment in the morning or afternoon
- I did not want to wake mum up
- I had my ears pierced
- I wanted to play Fifa



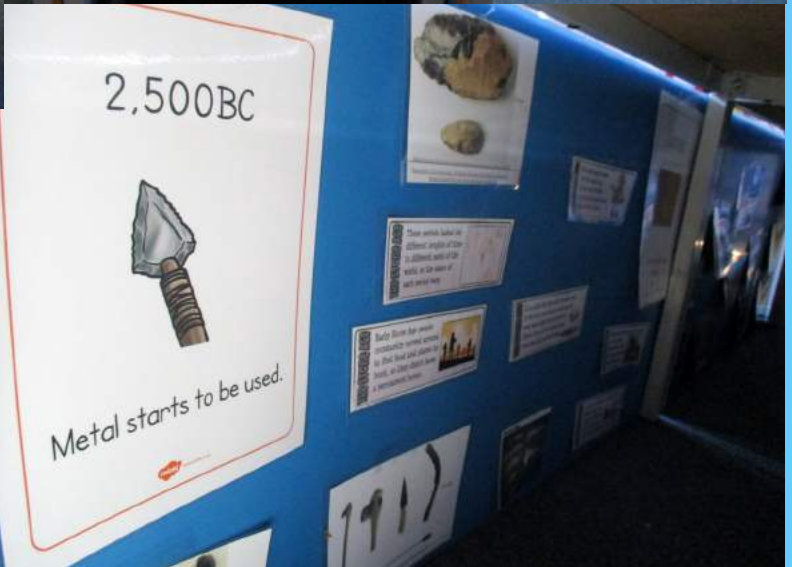
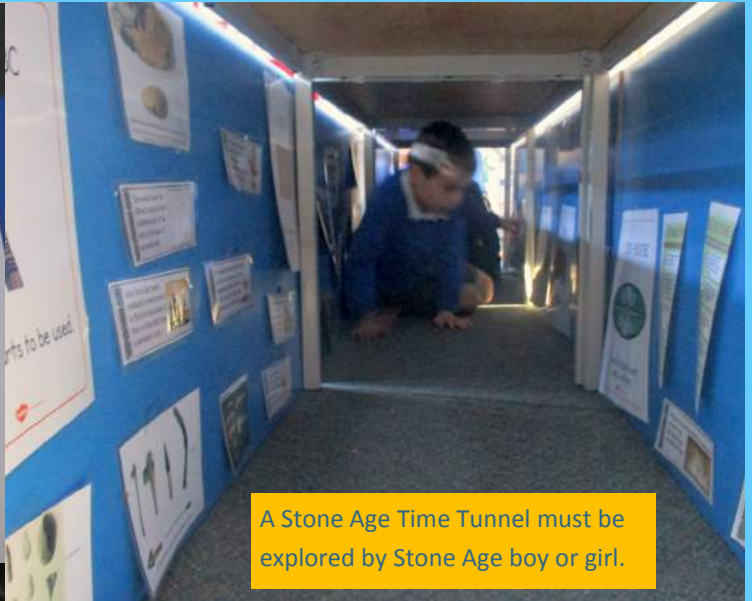
In our Year 1 Literacy this week we have been looking at Humorous Poems. We learnt a poem about where teachers keep their pets and then read Tony Mitton's poem – My Make a Face Poem.

In groups of 2 or 3 we then wrote 2 lines about what sort of face we could make. It didn't need to make sense but it had to rhyme!

Our 'Make a Face' Poem by Year 1

I can make a long face,
A really ginormous strong face.
I can make a sad face,
A very, very mad face.
I can make a bumpy face,
A horrible purply lumpy face!
I can make a wobbly face,
A funny bobbly face.
I can make a naughty face,
A run and jump and sporty face.
I can make a sick face
A hard, cold brick face.
I can make a grumpy face,
A cross, angry frumpy face.
I can make a Sunday face,
A happy kind of funday face.
I can make a worried face,
A weird sort of hurried face.
I can make a funny face,
A hippity, hoppity bunny face.
I can make a ducky face,
A puppy, and a mucky face.
And I can make a new face,
I really need a poo face!!

RECENT STONE AGE MOMENTS IN YEAR 3



GIRLS RUGBY



with Sidmouth RFC

Sidmouth Rugby Club Offers:

Under 7's to Under 12's
Mixed rugby: Sept - March
Sundays 10am - 12pm
Training / matches

Under 13's, 15's & 18's
Girls only : Sept - March
Sundays 1.30pm - 3pm
Training / matches

Training sessions & matches are held
at Sidford Pavilions, but is confirmed weekly

For your required age group
co ordinator contact details:
www.sidmouthrfc.co.uk



NERDY NOTES

If you are looking at our website, please remember to clear your cache on occasions. If you don't, then you may be reading out of date information.

For more details go to either



Wikihow's site:- www.wikihow.com/Clear-Your-Browser's-Cache

or

Indiana University's IT site:- <https://kb.iu.edu/d/ahic>



CELEBRATION ASSEMBLY CERTIFICATES

Congratulations to the following children who were awarded certificates in the recent Celebration Assembly :

Reception

Aine Beglin

Claire Tubbs

Ava Bellamy

Year 1

Joshua Hall

James Henderson

Matthew Farrington-Smith

Year 2

Marley-Ty Gilbert Owen Sheppard

Year 3

The Whole Class!!!

Year 4

Jessica Dilling

Taylor Thongphat

Charlie Tillotson

Year 5

Euan Buley

Frankie Parkin-Lovett

Ellie Kimber

Georgia Felton-Smith

Theo Swift

Year 6

Ellie Bowden

Theo Bramble

Thomas Fletcher

Bradley Horn

